

Location

'Corney Reach'

Local History

The present large housing development was built on the riverside area between Church Wharf and Pumping Station Road in the mid 1990s.

Archaeologists have proved that the land has been used for dwellings for at least six thousand years and was heavily used by the Romans, probably during the invasion of Britain by Julius Caesar.

More recently it was formerly the site of Corney House (demolished 1832) and its grounds, but it became an industrial area in the 19th century.

The sewage works was put up in Pumping Station Road, LEP Transport Ltd and Valor heating appliances both had factories at the wharves in Corney Reach.

Situation

Corney Reach is located North of the river Thames, East of Edensor Road, South of the A316 and West of Church Street.

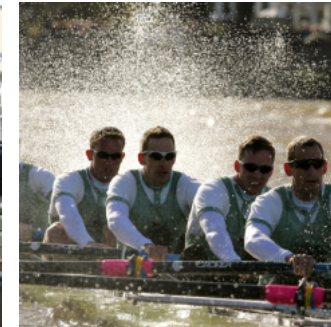
Points of interest

- Stunning river views
- Cosmopolitan lifestyle
- Riverside Pubs & Brasseries
- On the course of the Oxford v Cambridge boat race

General Opinion

Considered to be Chiswicks most recent large scale development offering 'cosmopolitan and modern living' in a tranquil and historic setting.

Very popular with professionals due to transport connections and considered ideal pied-a-terres.



020 8995 2030

oliverfinn.com

Map



©2009 Google-Map data ©2009-Tele Atlas

020 8995 2030

oliverfinn.com

Transport

Roads

A4/M4 Into Central London and out to the West country & Wales

A316/M3 Out to the South of England

Train

Chiswick British Rail (Into Waterloo)

Tube

Turnham Green (District)

Bus

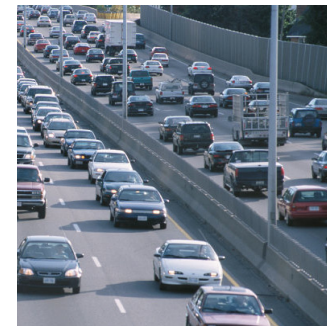
190, E3

Air

Heathrow (Terminals 1,2,3,4 & 5)

Corney Reach Mall boasts excellent transport links for both the motorist and users of public services. These include a number of different bus routes and London's Underground network.

Heathrow is accessed via either the A406 which makes Corney Reach Mall ideal for the regular flyer with average travelling time to the airport of about 30 minutes.



020 8995 2030

oliverfinn.com